

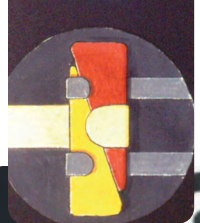
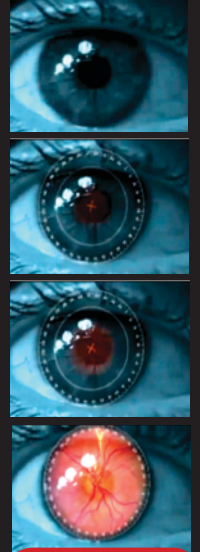


Voit. komp. Retinal scan comparison graph RUN; Jan., 10, 2016
Test Administered by: J.Bullock -prosjonnyb -Northamptonshire UK



Replicant (M) Des: BATTY (ROY)
NEXUS 6 N6MAA10816
Incept Date: 08 JAN., 2016 - Term. Date: 2019
Func: Combat / Colonization Defense Program
Phys: LEV. A
Ment: LEV. A

MANUFACTURED AT MARS FACILITY PLANT NO. 105 - DESIGNATED OFFWORLD • N/A FOR EARTH



© 2012 TYRELL CORP.

**COMBAT TRAINING IMMERSION V.R. COMPLETED:
03/28/2016**

BASIC COMBAT CLOSE QUARTER HAND TO HAND
ADVANCED COMBAT CLOSE QUARTER HAND TO HAND

BASIC COMBAT, CLOSE QUARTER EDGED WEAPONS
ADVANCED COMBAT, CLOSE QUARTER EDGED WEAPONS

BASIC COMBAT, CLOSE QUARTER SMALL ARMS / HANDGUNS
ADVANCED COMBAT, CLOSE QUARTER SMALL ARMS / HANDGUNS

BASIC COMBAT, AUTOMATIC / SEMI AUTOMATIC FIREARMS
ADVANCED COMBAT, AUTOMATIC / SEMI AUTOMATIC FIREARMS

BASIC COMBAT, ENERGY WEAPON-SMALL ARMS
ADVANCED COMBAT, ENERGY WEAPON-SMALL ARMS

BASIC COMBAT, EXPLOSIVES / DEMOLITION
ADVANCED COMBAT, EXPLOSIVES / DEMOLITION

BASIC COMBAT, SQUAD LEVEL ATTACK / EVASION TACTICS
ADVANCED COMBAT, SQUAD LEVEL ATTACK / EVASION TACTICS
BASIC COMBAT, COMPANY LEVEL ATTACK / EVASION TACTICS
ADVANCED COMBAT, COMPANY LEVEL ATTACK / EVASION TACTICS
BASIC COMBAT, COMMAND SQUAD LEVEL
ATTACK / EVASION TACTICS
ADVANCED COMBAT, COMMAND SQUAD LEVEL
ATTACK / EVASION TACTICS

**RATED SUPERIOR MODEL / RECOMMENDED
LEADERSHIP O.C.S. ADVANCED TRAINING AFTER
COMPLETION OF FIRST DUTY STATION**

FUNCTION TESTING AND FULLY OPERATIONAL CERTIFICATION PASSED
ON **03/28/2016** BY:

R. TRUSDALE, ADV. COMBAT TECH. LEVEL ALPHA-ZED



**WEAPONS SPECIFICATION QUALIFIED
FOR OPERATION, NON SUPERVISED:**

ALL STANDARD ISSUE EDGED WEAPONS

ALL STANDARD ISSUE SMALL ARMS / HANDGUNS

ALL STANDARD ISSUE AUTOMATIC / SEMI
AUTOMATIC ASSAULT RIFLE STYLE WEAPONS

ALL STANDARD ISSUE SMALL ARMS / HANDGUN/
ASSAULT RIFLE STYLE ENERGY WEAPONS

ALL STANDARD ISSUE EXPLOSIVES / DEMOLITION
WEAPONS

PHYSICAL SPEC:

- SELF REPAIRING DURILIUM POLYCRBANATE ALLOY COMBAT-CHASSIS SKELETON
- SELF REPAIRING ENDOTHERMIC SHEAR RESISTANT CARBON FIBER ENHANCED MUSCLE SYSTEM
- SELF REPAIRING HIGH IMPACT RESISTANT SYNTHETIC TRIPLE LAYER DERMAL COVER (SKIN)
- SYSTEM WIDE ANALGESIC-FLUSH PAIN INHIBITOR SPINAL SYRETTES
- NANONICALLY HARDENED NEURAL NET
- INTEGRATED REACTION TIME ENHANCED REFLEXES
- EMBEDDED INTEL QUANTUM CHIP REGULATORS W/ INCORPORATED SURGICAL-GRADE MONOBONDED CARBON FIBER
- MIL.-GRADE HARDENED SYSTEM WIDE E.M.P. DAMPENERS
- ENHANCED NEXUS 6 NEURAL NET PROCESSOR ENCASED IN DURILIUM POLYCRBANATE DAMASCUS STEEL ALLOY COMBAT-CHASSIS SKULL

**PROPERTY OF THE TYRELL CORP.
RATED FOR LEASE ONLY**

